

# Project Deliverables

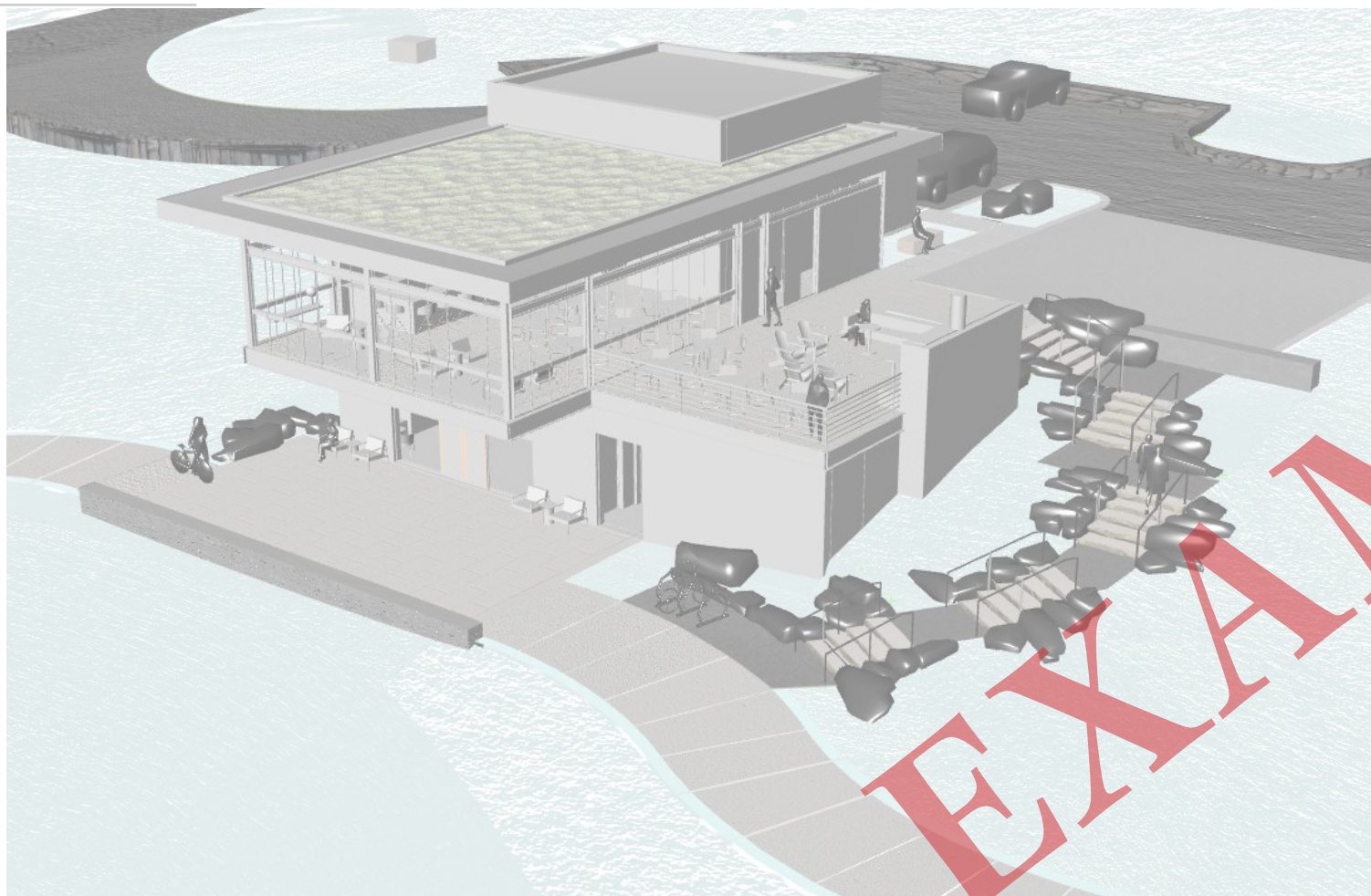
---





# Site Analysis, Initial Sketches and Existing Site Modeling

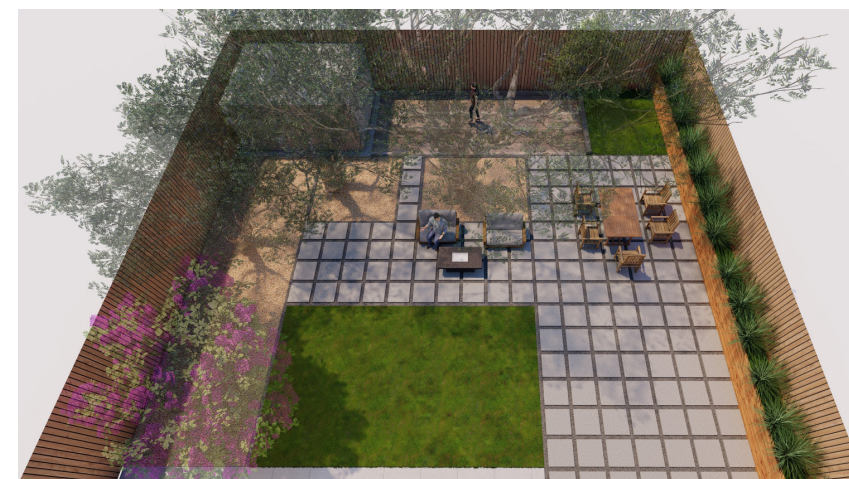
**These Exhibits Serve as Examples and Are NOT Applicable to Any Projects**





# Conceptual Design 3D Views

**These Exhibits Serve as Examples and Are NOT Applicable to Any Projects**





# Site Material References

**These Exhibits Serve as Examples and Are NOT Applicable to Any Projects**



### Asphalt

- ASPHALT PAVING
- FLUSH RIBBON CURB, NATURAL GRAY COLOR, TROWEL FINISH
- PAINT STRIPING AT PARKING



### Concrete Paving 1

- POURED IN PLACE CONCRETE PAVING
- NATURAL GRAY COLOR
- LIGHT BROOM FINISH
- TOOLED JOINTS



### Concrete Paving 2

- POURED IN PLACE CONCRETE PAVING
- INTEGRAL COLOR
- SAND FINISH
- SAW CUT JOINTS



### Concrete Paving 2 (with 3" Stabilized Joints)

- TO MATCH CONCRETE PAVING 2
- 3" STABILIZED GRAVEL OR DECOMPOSED GRANITE JOINTS, PER PLAN



### Gravel at Planting Areas

- USE AS GRAVEL MULCH AT PLANTING AREAS, 3" DEPTH, NO STABILIZING GRID
- SIZE: 3/8 IN.
- COLOR: CALIFORNIA GOLD
- SOURCE: SOUTHWEST BOULDER & STONE



### Gravel at Parking Lot

- VEHICULAR GRAVEL PARKING SURFACE
- SIZE: 3/4 IN.
- COLOR: CALIFORNIA GOLD OR SIMILAR
- METAL HEADER



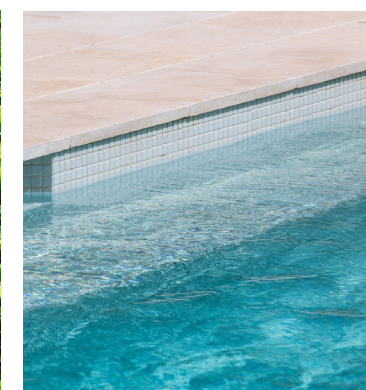
### Decomposed Granite

- 'CALIFORNIA GOLD' STABILIZED DECOMPOSED GRANITE
- SIZE: 1/8" MINUS
- METAL EDGING WHERE ABUTS PLANTING AREAS



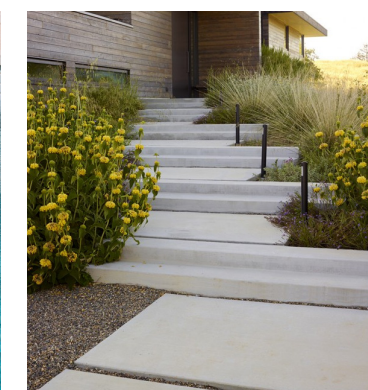
### Lawn

- BERMUDA CULTIVAR
- IRRIGATED
- NOTE: STEEL EDGING AT PLANTING AREAS



### Lap Pool & Spas

- PLASTER FINISH POOL AND SPAS WITH WATERLINE TILE TBD



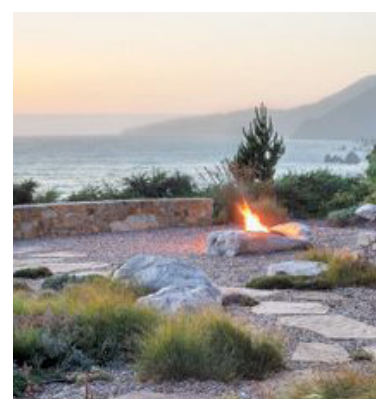
### Concrete Stair

- CONCRETE STAIR, LOCATIONS PER PLAN
- FLAT BAR METAL HANDRAILS BOTH SIDES OF STAIR
- CONCRETE FINISH TO MATCH ADJACENT PAVING



# Site Furnishings and Lighting References

**These Exhibits Serve as Examples and Are NOT Applicable to Any Projects**



**Custom Boulder Fire Pit**

- LOCALLY SOURCED BOULDER WITH INTEGRATED GAS FIRE ELEMENT
- SIZE APPROX. 10'L X 4'W X 18"HT
- ELECTRONIC IGNITION W/SHUT OFF VALVE
- CUSTOM SCREEN/GUARD ELEMENT
- FINAL SPEC TO BE CONFIRMED BY WDI



**Flexible Outdoor Seating**

- LOLL NO. 9 LOUNGE CHAIR AND LOLL LOLLGAGGER COCKTAIL TABLE (QTY. 32)
- COLOR APPLE RED



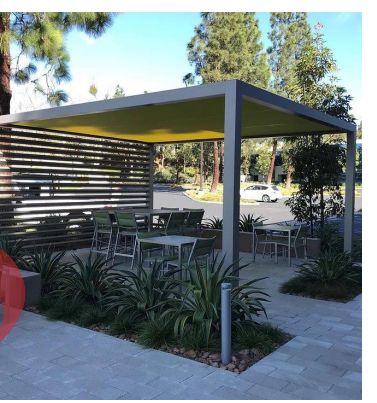
**Sport Courts Seating**

- FORMS & SURFACES VAYA BENCH, CHAIRS, AND TABLE OR SIMILAR
- FRAME COLOR ALABASTER, TEXTILE COLOR CAST PETAL
- BICOLOR CUSHIONS TO MATCH COTINO THEME COLORS
- TABLETOP VIVI GRAPHIX GLASS
- FINAL SPEC TO BE CONFIRMED BY WDI



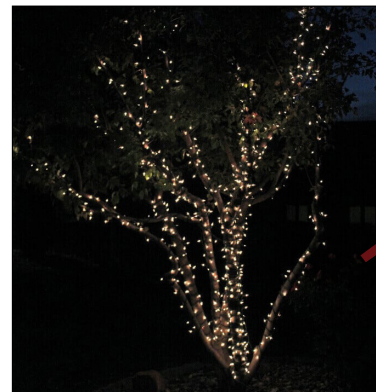
**Prefabricated Fire Pit**

- PALOFORM BENTO CONCRETE FIRE PIT, OR SIMILAR
- SIZE: 60" X 60"
- ELECTRONIC IGNITION W/SHUT OFF VALVE
- TEMPERED GLASS SCREEN



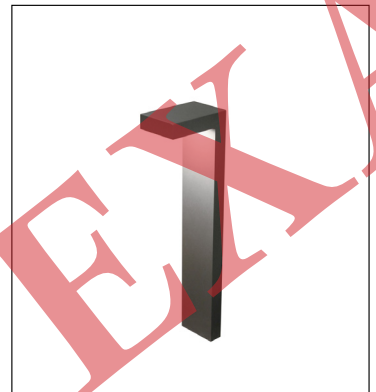
**Shade Structure**

- METAL FRAME SHADE STRUCTURE WITH CANVAS TOP
- COLOR: SOFT WHITE



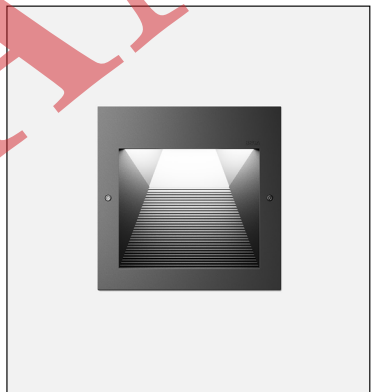
**Holiday Lighting At Deciduous And Evergreen Trees**

- PROFESSIONAL GRADE LINE OR LOW VOLTAGE INCANDESCENT OR LED
- PERMANENTLY SEALED WATERTIGHT IP44 RATED, UL AND USA APPROVED FOR LONG-TERM INSTALLATION I.E. 11-YEAR LIFE WITHOUT MAINTENANCE



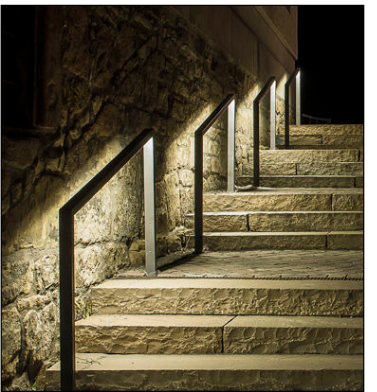
**Path Light Illuminating Bollard**

- HESS LIGHTING, LINEA S
- HEIGHT 24" OR T.B.D
- COLOR BRONZE OR BLACK



**Recessed Wall Luminaire**

- BEGA, 24211 OR SIMILAR
- LED, ASYMMETRIC FORWARD THROW
- COLOR BLACK



**Handrail With Integral LED Light**

- WITH GLASS WALL/PANEL MOUNTING, DIMMABLE, REMOTE DRIVER (NOT VISIBLE)



**Tree Low Angle Directional Landscape Light**

- BK LIGHTING, DELTA STAR OR SIMILAR
- W/ SHIELD OR HEX LOUVER, LED, AIM AND LOCK KNUCKLE
- COLOR BRONZE OR BLACK



# Planting Imagery

**These Exhibits Serve as Examples and Are NOT Applicable to Any Projects**



BRAHEA ARMATA



PROSOPIS GLANDULOSA 'AZT'



PARKINSONIA X 'DESERT MUSEUM'



PROSOPIS HYBRID 'AZT'



CAESALPINIA CACALACO



PARKINSONIA PRAECOX



HESPERALOE PARVIFLORA 'PERPA'



LEUCOPHYLLUM 'SUMMER SNOW'



LEUCOPHYLLUM 'LYNN'S LEGACY 'BRAVO'



AGAVE OCAHUI



AGAVE PARRYI TRUNCATA



AGAVE 'BLUE GLOW'



CARISSA MACROCARPA 'BOXWOOD BEAUTY'



BOUGAINVILLEA X 'ROSENKA'



CARISSA MACROCARPA 'GREEN CARPET'



VERBENA PULCHELLA



MUHLENBERGIA 'WHITE CLOUD'



DALEA CAPITATA 'SIERRA GOLD'



# Material & Dimension Plan

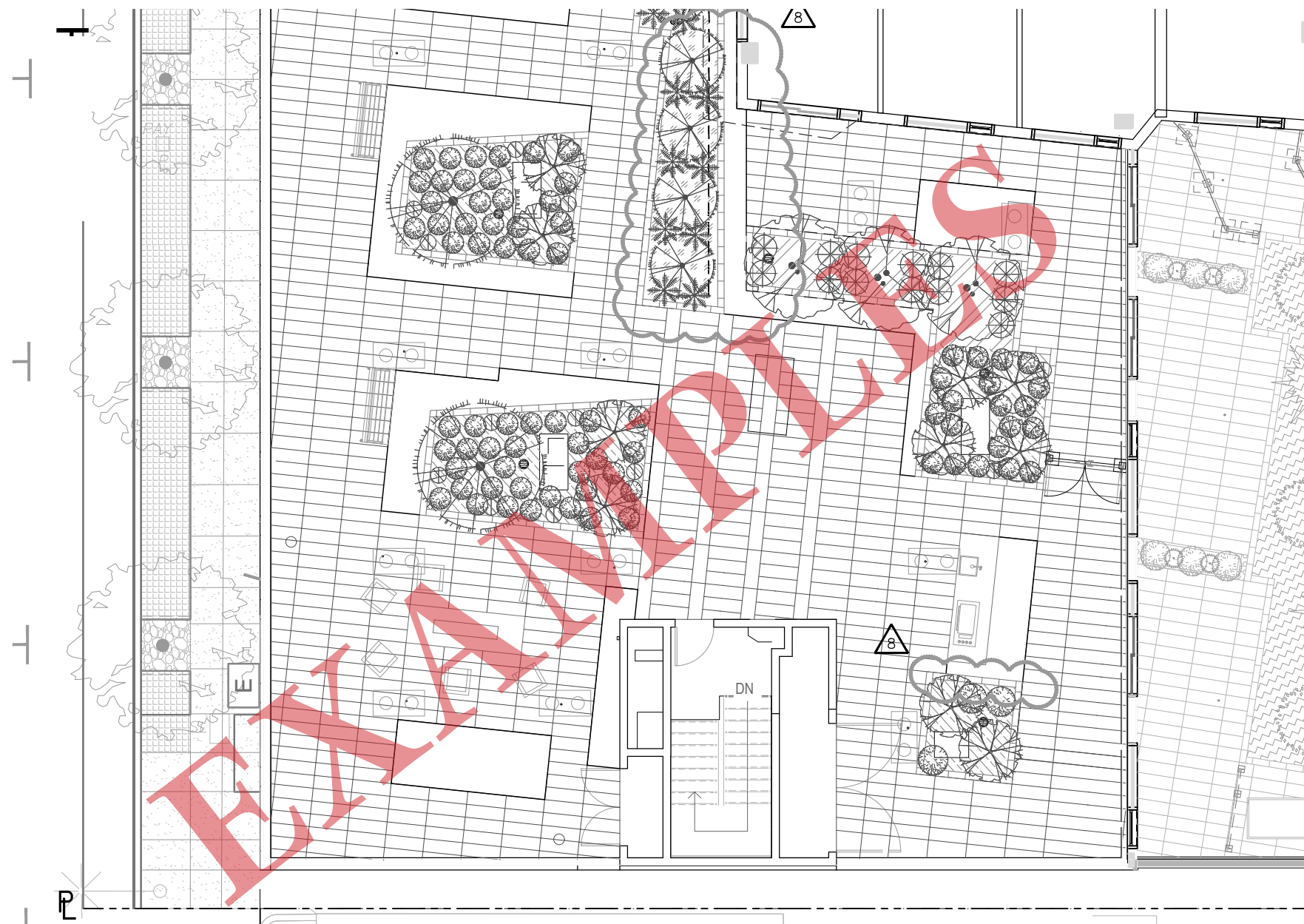
**These Exhibits Serve as Examples and Are NOT Applicable to Any Projects**





# Planting Plan & Planting Schedule

These Exhibits Serve as Examples and Are NOT Applicable to Any Projects



### PLANTING LEGEND

STREETSCAPE LEGEND	LEVEL 2 (PODIUM) LEGEND	LEVEL 6 (ROOF TERRACE) LEGEND
<ul style="list-style-type: none"> <li>PLATANUS ACERIFOLIA LONDON PLANE TREE 36" BOX WATER USE: MED</li> <li>LOPHOSTEMON CONFERTA BRISBANE BOX 36" BOX WATER USE: MED</li> <li>EXISTING STREET TREE TO REMAIN (PLATANUS ACERIFOLIA)</li> </ul>	<ul style="list-style-type: none"> <li>FATSIA JAPONICA JAPANESE ARALIA 15 GALLON WATER USE: LOW</li> <li>ASPIDISTRA ELATIOR CAST IRON PLANT 5 GALLON WATER USE: LOW</li> <li>VINCA MINOR DWARF PERIWINKLE 4" POTS AT 8" WATER USE: MED</li> <li>CLIVIA MINIATA KAFFIR LILY 1 GALLON AT 12" WATER USE: MED</li> <li>BAMBUSA OLDHAMII GIANT TIMBER BAMBOO 36" BOX WATER USE: LOW</li> <li>STRELITZIA NICOLAI GIANT BIRD OF PARADISE 24" BOX WATER USE: MED</li> <li>PITTIOSPORUM TOBIRA 'VARIEGATED' 'VARIEGATED WOOK' ORANGE 15 GALLON WATER USE: LOW</li> <li>DIETES BICOLOR FORTNIGHT LILY 1 GALLON WATER USE: LOW</li> <li>GRAVEL MULCH</li> <li>AGAPANTHUS 'STORM CLOUD' 1 GALLON AT 24" O.C. WITH EUPHORBIA CHARACIA 'DWARF' DWARF EUPHORBIA 1 GALLON AT 24" O.C. WATER USE: LOW</li> </ul>	<ul style="list-style-type: none"> <li>MYRTICA CALIFORNICA PACIFIC WAX MYRTLE 24" BOX WATER USE: LOW</li> <li>JUNIPERUS CHINENSIS 'TORULOSA' HOLLYWOOD JUNIPER 36" BOX WATER USE: LOW</li> <li>POLYGALA X DALMANSIANA SWEET PEA SHRUB 15 GALLON WATER USE: LOW</li> <li>CHONDROPETALUM ELEPHANTINUM CAPE BUSH 15 GALLON WATER USE: HIGH</li> <li>AGAVE ATTENUATA SOFT-TIPPED AGAVE 15 GAL WATER USE: LOW</li> <li>STIPA TENUISSIMA MEXICAN FEATHER GRASS 1 GAL WATER USE: LOW</li> <li>CORNUS ALBA 'SIBIRICA' TATARIAN DOGWOOD 1 GAL WATER USE: MED</li> <li>RIBUS PENTALOBUS BRAMBLE 1 GALLON WATER USE: MED</li> <li>GRAVEL MULCH</li> <li>FRAXINA CHLOROENSIS BEACH STRAWBERRY 4" POTS @ 8" O.C. WATER USE: MED</li> <li>ELYNUS GLAUCUS WILD RICE 1 GALLON @ 18" O.C. WATER USE: LOW</li> <li>SENECIO MANDRALISCAE BLUE CHALKSTICK 1 GALLON @ 18" O.C. WATER USE: LOW</li> <li>AGAVE AMERICANA CENTURY PLANT 15 GAL WATER USE: LOW</li> <li>AGAVE AMERICANA 'VARIEGATA' VARIEGATED CENTURY PLANT 15 GAL WATER USE: LOW</li> <li>CELANOTHUS THYRSIFLORUS CALIFORNIA WILD LILAC 15 GAL WATER USE: MED</li> <li>BOUGAINVILLEA SPECIES PURPLE BOUGAINVILLEA 15 GAL WATER USE: LOW</li> <li>ERIGERON KARwinskianus SANTA BARBARA DAISY 4" POTS @ 12" O.C. WATER USE: LOW</li> </ul>
<p>ALL PLANT SPECIES SHALL BE NON-INVASIVE PER CAL-IPC.</p>		



# Conceptual Details, Sections & Enlargements (Additional Service)

These Exhibits Serve as Examples and Are NOT Applicable to Any Projects

